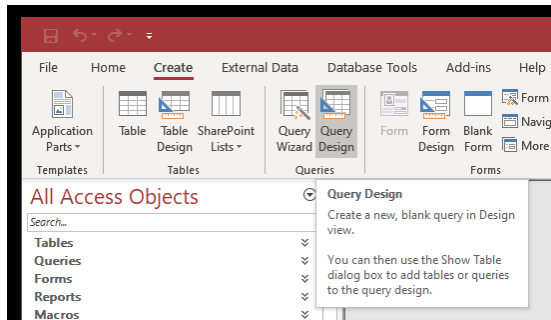
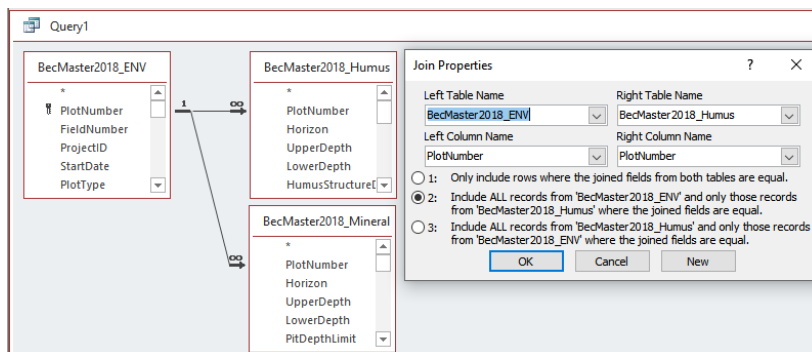


## Finding Plots Without Horizon Data

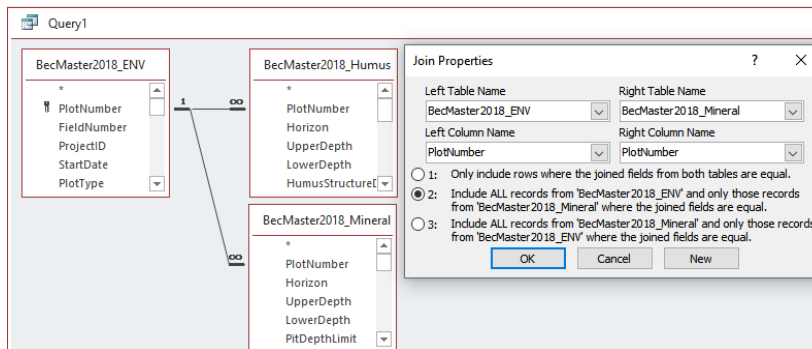
Create a new query and include the env, humus, and mineral tables



Double-click the line between the env and humus table. Select option number two, all records from env and just the matching humus records.



Double-click the line between the env and mineral table. Select option number two, all records from env and just the matching mineral records.



These criteria will find plots missing both humus and mineral horizon data.

Field:	PlotNumber	PlotNumber	PlotNumber
Table:	BecMaster2018_ENV	BecMaster2018_Humus	BecMaster2018_Mineral
Sort:			
Show:	<input checked="" type="checkbox"/>	<input type="checkbox"/>	<input type="checkbox"/>
Criteria:		Is Null	Is Null
or:			

These criteria will find plots with either humus or mineral horizon data missing

Field:	PlotNumber	PlotNumber	PlotNumber
Table:	BecMaster2018_ENV	BecMaster2018_Humus	BecMaster2018_Mineral
Sort:			
Show:	<input checked="" type="checkbox"/>	<input type="checkbox"/>	<input type="checkbox"/>
Criteria:		Is Null	
or:			Is Null