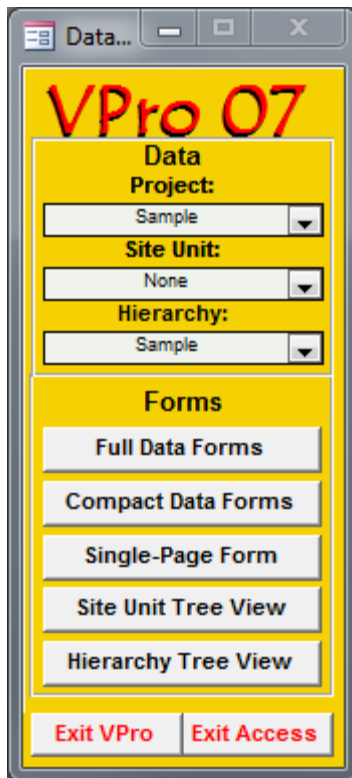


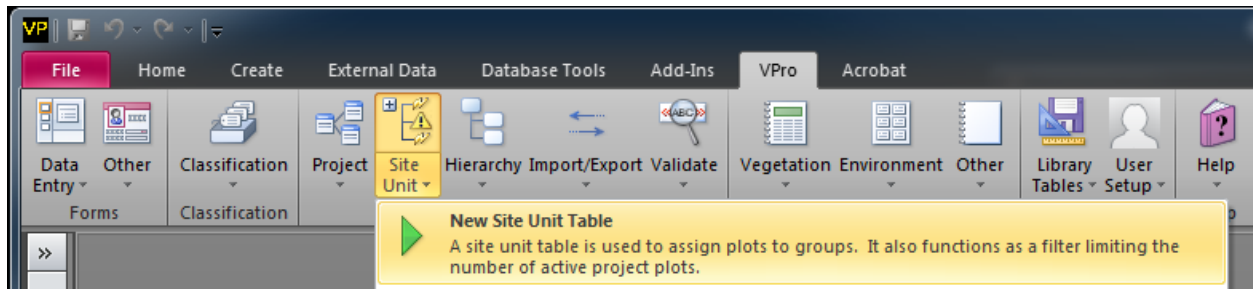
## Create a Site Unit Table with all Project Plots



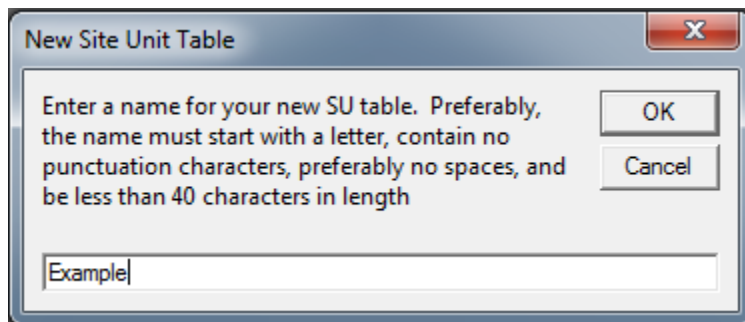
Set current project to the one containing the plots to base the site unit table on.

Set the current site unit table to "None".

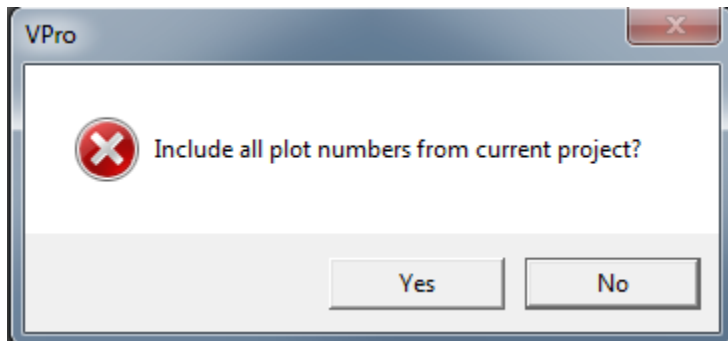
Select the VPro tab, Site Unit, then "New Site Unit Table".



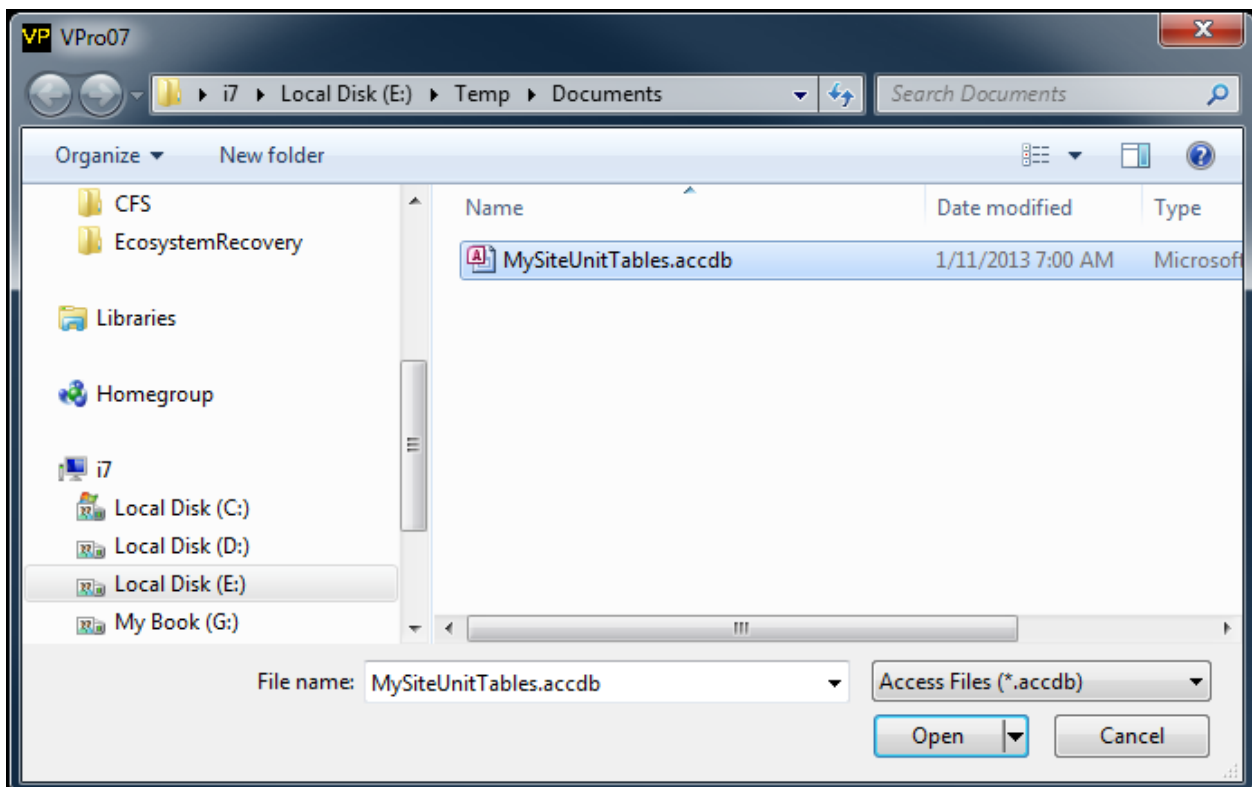
Enter a name for your new site unit table.



When prompted, click Yes to “Include all plot numbers from project”.



Select an existing database or enter the name of a new database you wish to create.



If the database didn't exist, VPro will automatically create it for you.

