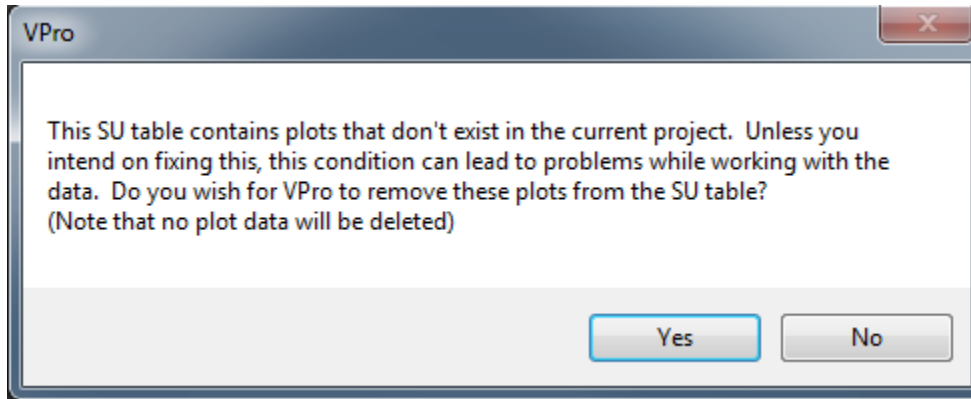


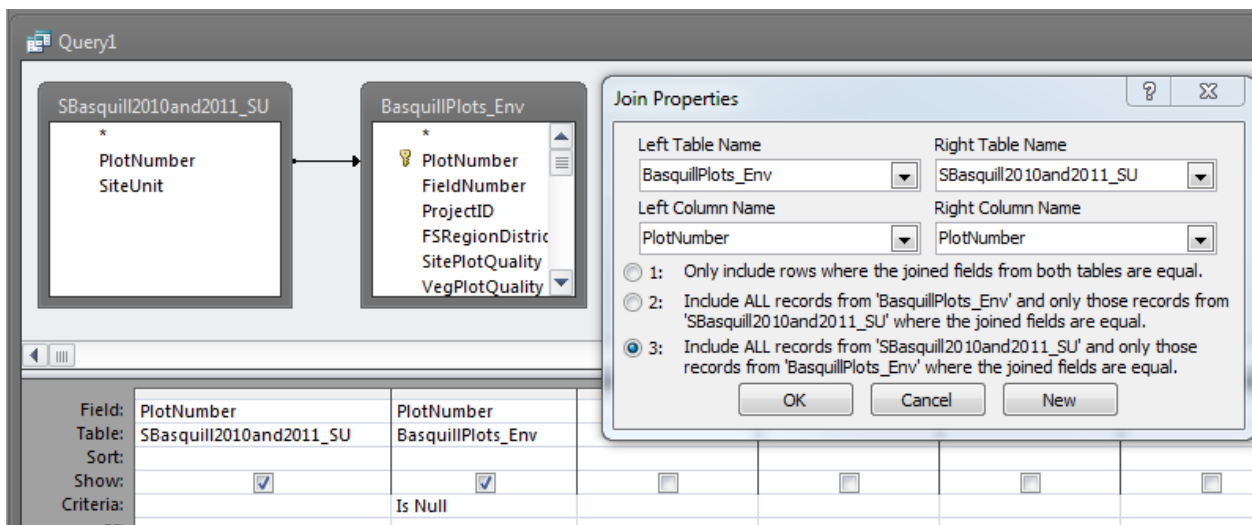
## Checking for Unmatched Plots Using a Query

Here's a common scenario: You select a site unit table and VPro gives you a message informing you that there are plots in your site unit table that don't exist in your current project. VPro offers to delete the plots from the site unit table, but you feel uncomfortable deleting them without knowing which records are to be removed. If you feel uncomfortable, please click No and use a relatively simple query to see where the mismatch exists.



In the example below we are checking for plots in the site unit table that don't exist in the environment table, but it could be any two tables.

- Create a new query and either select using the Access prompt or drag your tables onto the query.
- If the tables aren't automatically joined, drag the matching field from one table to the other.
- Double-click the join line and set the properties so that you include all the records from the table which is suspected of having extra records.
- Add the two fields and enter "Is Null" under the field you suspect is missing records.



Running the query will return a list of the mismatched records. In this example we can see that there are 9 plots in the site unit table that don't exist in the environment table.

SBasquill2010and2011_SU.PlotNumber	BasquillPlots_Env.PlotNumber
3015	
3058	
3160	
3161	
3163	
3165	
3168	
3173	

By reversing our join properties and changing our criteria, we can see that there are 6 plots in the environment table that don't exist in the site unit table.

The screenshot shows a query design view with two tables: 'SBasquill2010and2011\_SU' and 'BasquillPlots\_Env'. They are joined on the 'PlotNumber' field. The 'Join Properties' dialog box is open, showing the following settings:

- Left Table Name: BasquillPlots\_Env
- Right Table Name: SBasquill2010and2011\_SU
- Left Column Name: PlotNumber
- Right Column Name: PlotNumber
- Criteria:  2: Include ALL records from 'BasquillPlots\_Env' and only those records from 'SBasquill2010and2011\_SU' where the joined fields are equal.

SBasquill2010and2011_SU.PlotNumber	BasquillPlots_Env.PlotNumber
	3023
	3024
	3025
	3026
	3027
	3028