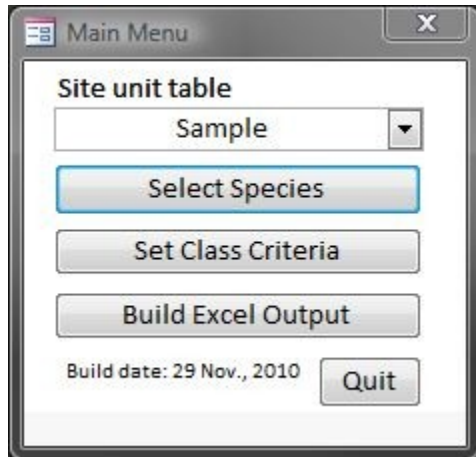
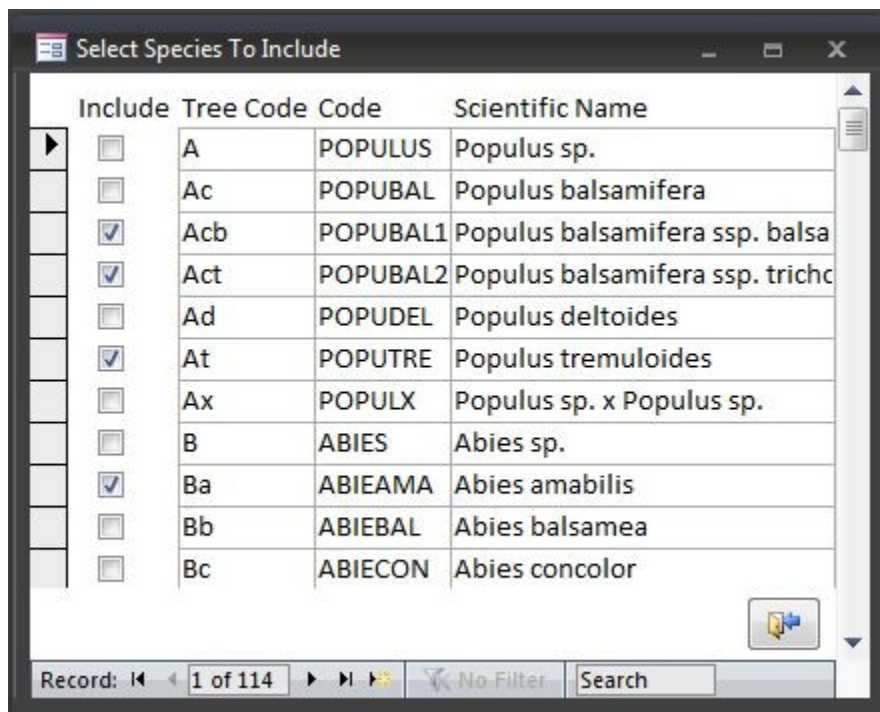


Comparing Tree Guide Suitability to BEC Prominence

The utility already includes all the vegetation data found in the BEC master, all you do is select a site unit table using the interface you're familiar with from using VPro.



You're probably not interested in displaying all 114, so click the button "Select Species" to narrow the list.



We're not interested in prominence classes right now, so we can ignore the button "Set Class Criteria".

Click the button “Build Excel Output” to bring up the output form.

If you want to include all the units in the tree guide regardless if there’s a match in the selected site unit table, select the first option.

If you want the total cover for each species in the vegetation table to be recalculated, select the second option.

Click the “Build Table” button to send the summary to Excel.

The BEC data will be shaded green while the guide data remains white.

	A	B	C	D	E	F	G	H	I	J	K
	SiteUnit	Source	nPlots or Region	Acb	Act	At	Ba	Cw	Dr	Ep	Fd
2	ESSFwk1/02	BEC	4								
3	ESSFwk1/02	Guide	Cariboo								
4	ESSFwk1/02	Guide	Pr George								
5	IDFdk4/01	BEC	2								
6	IDFdk4/01	Guide	Cariboo			4					1
7	MSxv/05	BEC	1								
8	MSxv/05	Guide	Cariboo								
9	SBSmk1/09	BEC	1							5.00	
10	SBSmk1/09	Guide	Pr George		4	4					
11	SBSwk1/01	BEC	76			0.21				0.88	0.13
12	SBSwk1/01	Guide	Cariboo		4						1

Note: the current prominence equation used is $(\text{Mean Cover} * 10) * \text{Sqr}(\text{Presence})$